



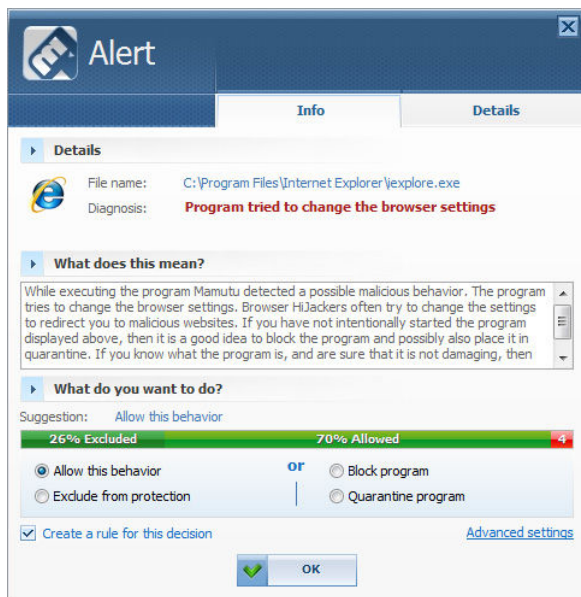
Press release

Emsi Software presents Mamutu 1.5

New version of the Behavior Blocker uses the "Intelligence of the masses"

Salzburg, 16. February 2008 - Today, Emsi Software presents the new Version 1.5 of its behavior-oriented Malware blocker Mamutu. A highlight is the new "Community Feature": Before each alarm, Mamutu checks if other users have assessed the suspect program as damaging. This significantly reduces the number of annoying popups and false alarms for obviously benign programs.

Mamutu belongs to the class of so-called Behavior Blockers that, in contrast to purely



signature-based Virus defense systems, analyze the behavior of damaging software in the computer and emit an appropriate warning. With the Community Feature in Mamutu 1.5, the security specialist Emsi Software makes use of the "Intelligence of the masses". When an alarm is raised Mamutu provides a recommendation based on the decisions of other users: A clearly understandable graphic illustrates the percentage of users that have performed each possible action (see illustration). This allows the user to quickly decide whether to allow the behavior of the notified program and exclude it from monitoring, or to block it and place the program in quarantine.

The user can also define a particular percentage value at which the application is automatically permitted. For example: If (e.g.) 90% of the users have classified a background updater as not damaging, then the application is automatically permitted to run. This ensures a smooth workflow without annoying popups and the user no longer needs to make sometimes difficult decisions about unknown processes. The transfer of your own decisions to the Emsi Software Anti-Malware Network is of course voluntary and can be deactivated at any time.

Recognition of mouse and keyboard simulators

Mamutu now recognizes 18 Malware-typical behavior patterns that allow almost every type of damaging program to be identified. A new feature in Version 1.5 is the recognition of applications that simulate mouse movements and keyboard typing. These types of operation are immediately notified. Malware programs usually use this technique to terminate security programs by simulating the exit operations normally performed by the user. Users who wish to be extra safe can activate the "Paranoid Mode" in the new system, which also provides notification of suspicious program starts and applications with suspicious or Malware-similar file layouts.



Press release

Emsi Software recently published its "Annual Malware Report 2007". This reported that the number of computer pests, also known as Malware, has again rapidly increased in the last year. "In the foreseeable future, pure signature-based analysis will no longer be able to cope with the growing volume of Malware" says Christian Mairoll, the General Manager of Emsi Software. The manufacturer is therefore relying on behavior-based Malware defense that permanently monitors all actions performed by software on the PC.

Prices and availability:

A 30-day evaluation version of Mamutu 1.5 is available for download at <http://www.mamutu.com/en/software/download/>.

A 1 year license costs \$29.95 and can be directly ordered from the manufacturer's website at <http://www.mamutu.com/en/order/mamutu/>.

A detailed functional overview of Mamutu 1.5 is available at: <http://www.mamutu.com/en/software/mamutu/>

Screenshots of Mamutu 1.5 are provided at: <http://www.mamutu.com/en/software/mamutu/>

The following list shows the functional differences between Mamutu, a-squared Free, a-squared Anti-Dialer and a-squared Anti-Malware: <http://www.mamutu.com/en/software/compare/>

A Packshot is provided at http://www.mamutu.com/images/logos/mamutu/boxshot_mamutu_1600x2000.jpg

ABOUT EMSI SOFTWARE

Emsi Software GmbH was founded in Oberndorf, Austria by founder and company head Christian Mairoll in 2003. The security specialist concentrates on behavior-based Malware blocking in the IT security sector. The behavior analysis module of the main product, a-squared Anti-Malware, monitors all active programs in real-time. To do this, the software switches between operating system and program levels in order to monitor the behavior of all running programs. If damaging actions are suspected then an alarm is emitted and the Malware can be stopped. Emsi Software introduced the Mamutu pure Behavior Blocker to the market in 2007. Whereas a-squared Anti-Malware has "Double real-time protection" and combats pests based on their behavior and using Signatures, "Mamutu" focuses solely on behavior analysis and does not contain a virus scanner.

Our goal is to become a leading European supplier of behavior-based technology for computer pest defense.

PRESS CONTACT

Thomas Guenther

PR Manager Intl.

Mail: tg@emsisoft.com